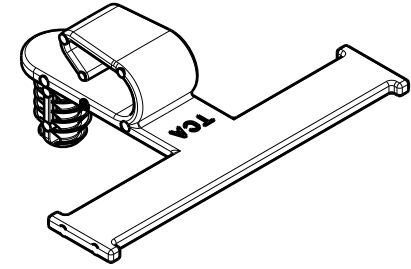


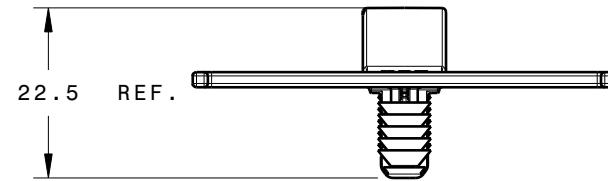
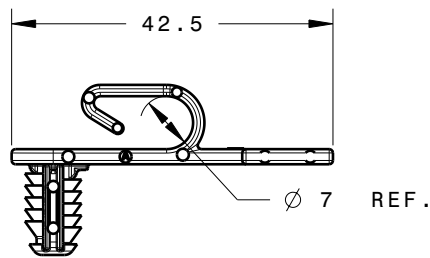
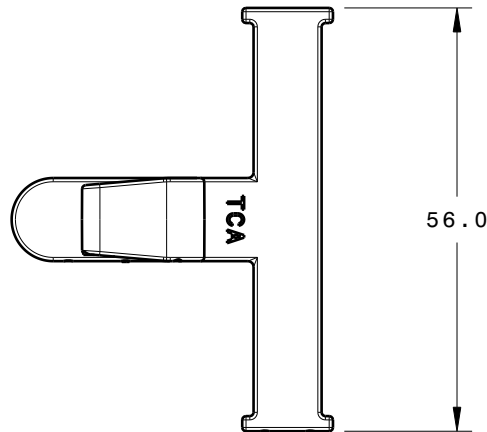
REFERENCE:

PERFORMANCE REQUIREMENTS AT DRY AS MOLDED:

1. FIR TREE PUSH IN FORCE: REF. 10 LBS MAX IN A 6.6mm HOLE AND A PLATE THICKNESS OF 1.8mm
2. FIR TREE PULL OUT FORCE: REF. 30 LBS MIN IN A 6.6mm HOLE AND A PLATE THICKNESS OF 1.8mm
3. SHEET METAL THICKNESS RANGE: 0.70mm - 5.50mm
4. CIRCULAR HOLE SIZE DIAMETER: 6.6 +/- 0.30



Isometric View



INVENTORS

HellermannTyton®

ALL PROPRIETARY RIGHTS IN THE SUBJECT MATTER SHOWN ON THIS DRAWING ARE EXCLUSIVE PROPERTY OF HELLERMANN TYTON

name	date	city, state
S. ADAMS	7/17/07	MENOMONEE FALLS, WI.

REVISIONS	DR level	02
	AW by	SJA
	IN date	1/9/08
	NG ECN #	010955
	part level	A

DIMENSIONS	TOLEANCES	.XXXX = ± 0.25
		.XXX = ± 0.50
		.XX = ± 1.00
		.X = ± 2.00
		∠ = ± 0.50
	unless otherwise specified	
units	millimeters	

PART	number	SOCHFT6	PRODUCTION
	name	TAPE CLIP WITH OFFSET (31mm) FIR TREE (6.6mm)	
	material	NYLON 6/6, IMPACT MODIFIED, HEAT STABILIZED, UV RESISTANT COLOR: BLACK	

DRAWING	FORMAT	AH	CATIA V5	SCALE	1:1	
	VERSION	J	CAD	previous drawing number		
	drawn	S. ADAMS	J. PASSILLA	approved		
	date	7/30/07	checked	7/30/07	approved	
	type	CUSTOMER		sheet 1 of 1		
number	MT07-028-003CST					